



# Picnic Shelter Committee

August 27, 2020

Do you want a nice picnic shelter in Foxhall Park? Many Foxhall residents do. Questionnaire preferences and general comments from Foxhall Community Association members show strong support for a picnic shelter.



**Example**

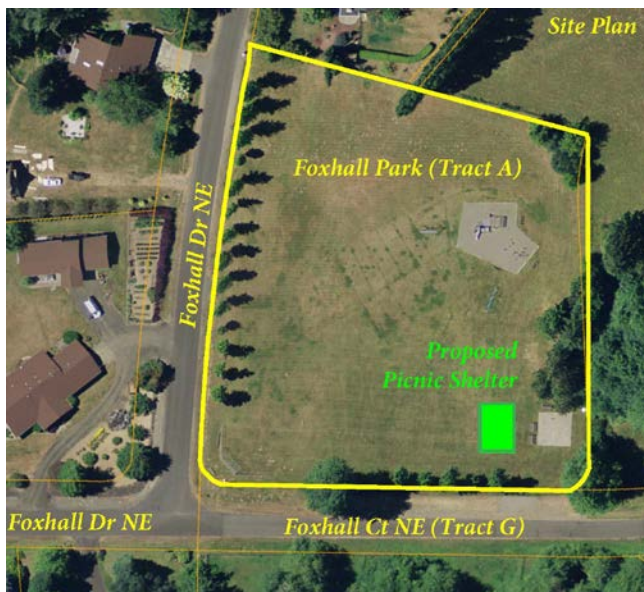
A picnic shelter is a simple roof structure with no side walls, similar to this example photo.

With a shelter we anticipate residents can get more use out our community owned park. A covered structure means the park can be enjoyed rain or shine!

Foxhall Park can be enjoyed by more residents and more often with a picnic shelter as a good central meeting place. Read a good book, enjoy a friendly visit, or celebrate a special occasion.

We traditionally celebrate our annual Foxhall picnic each August in Foxhall Park.

Last picnic (2019) we set up a 13'x39' tent as a mock picnic shelter for shade. Many said they like the location and length, but a permanent picnic shelter should be twice as wide.



Foxhall Park (park 1) is a very nice 2.7 acre active park located within Foxhall, at the intersection of Foxhall Drive NE and Foxhall Court NE. Park features include: picnic tables, ball field with backstop, basketball sport court, swings, playground, and parking.

Proposed location for the picnic shelter is the southeast corner of Foxhall Park, beside the existing sport court and gravel parking area.

Proposed size for the picnic shelter is 21'x32' plus 4-foot eaves.

A Picnic Shelter (ad hoc) Committee was formed to develop preliminary design and cost estimates for further consideration by Foxhall membership: Greg Darnell, Elaine Vaughn, Alan Vaughn, Shelly Couey, Paul Carlson, Kit Metlen, and Rob Armstrong.



We believe we can get this building built for a bargain price of \$23,000, by drawing upon unique talent and generosity that exists right now within our community.

We estimate the total value of this picnic shelter at \$66,000, if bid out to hire a contractor to handle all the design, management, permits, equipment, labor and materials.

We propose a “community barn raising” approach. At this rare moment (that took over 30 years to arrive at), we have a really unique team of talent having experience, skills, tools, equipment, and community service spirit to build this picnic shelter for us.

Our team of talent has helped Foxhall with some major community improvements over the past several years, including our trails, playground, and drainage system. The likelihood that we’ll hold this team together for many more years is unlikely, so the time to act is now. Opportunity knocks but once.

Under this “community barn raising” approach, Foxhall will pay for permits, final design, materials, and any specialized hauling or equipment rental. Our team of generous Foxhall member volunteers will participate in the development and construction of the picnic shelter with their experience, labor, tools, and equipment.

Preliminary Budget for Picnic Shelter:

Item	Description	Budget Estimate for Foxhall to pay for plans, permits & materials	Estimate of “in kind” value we get from our team of volunteers
1	Construction Plan Design Fees	\$2,400	\$1,000
2	Permits (Thurston County)	\$1,200	\$1,000
3	Concrete slab, footing, sidewalk	\$5,599	\$11,197
4	Rock base under slab	\$1,140	\$2,200
5	Drainage system	\$1,452	\$2,903
6	Columns to support roof structure	\$467	\$2,000
7	Trusses, beams, joists	\$4,387	\$8,774
8	Roofing, underlayment, wood sheeting	\$5,692	\$11,384
9	Lighting and Electric	\$943	\$1,887
	Totals	\$23,280	\$42,426
	<b><i>Estimate of what Foxhall pays</i></b>	<b><i>\$23,280</i></b>	<b><i>\$0</i></b>

Do you want a nice picnic shelter in Foxhall Park?  
Please write your feedback to Foxhall Board on the accompanying survey .